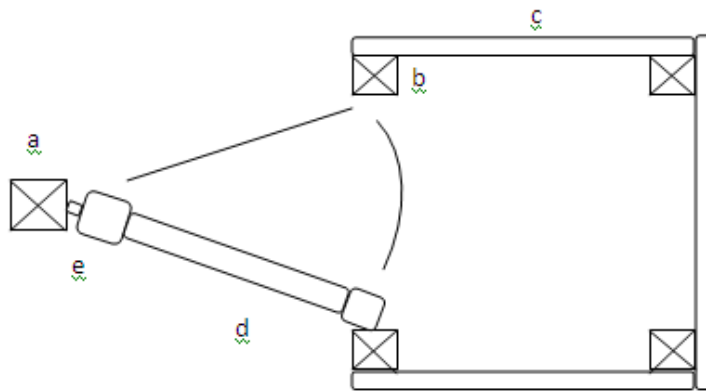


## Medbourne Large Mobility Kissing Gate – installation guide

### Components:

- 1no. 1.2m wide timber gate (d)
- 1no. 2.1m x 150 x 150mm gate post (a)
- 4no. 2.1m x 100 x 100mm enclosure posts (b)
- 9no. 1.8m x 100 x 50mm chamfered edge rails (c)
- 1no. 45° self-closing hinge set (18" top band) (e)
- 4" nails also required



### PREPARATION

#### PLAN THE LAYOUT OF THE WHOLE KISSING GATE

#### PREPARE THE GATE

The approximate dimensions required are calculated from the outside of the posts and are:  
Distance from the gate post to the back of the square construction = 3.05m  
Installed height = 1.0m - 1.2m  
Distance between the enclosure posts = 1.8m (outside)

The layout is square with approximately 1.8m between the two sides and 1.8 m from the kissing posts to the back.

Check the general condition of the path, position of any overhanging branches or tree roots etc, and remember that the gate must be closed on the far side from livestock.

Attach the 18" hinge to the top of the gate as follows:

Mark the position of the three holes on each side.

Drill approximately half-way through the top rail from each side to meet in the middle.

Feed the coach bolt through and tighten up.

Attach the 5" hinge to the bottom of the gate in a similar way. It should be on a level with the bottom rail. The offset eye should be on the opposite side of the gate to the closing side.

#### PREPARE THE GATE POST

Decide where the gate should hang on the post in relation to height.

Mark the position of the plates on the gate post. (see illustration)

If one of the hooks is to be reversed for added security, place the plates to allow approximately 5mm for the gate to rise between its open and closed positions.

Drill the gate post and attach the plates with 2 coach screws only. Fixing of the bottom (adjustable) plate requires a short hole to be drilled in the post to take the threaded screw.

#### Installation Instructions

##### INSTALL THE GATE POST AND GATE

Dig the hole for the gate posts and insert in.

Fill the bottom of the hole with stone/rubble and ram down firmly. Check that the post keeps upright.

Backfill the hole with the most solid material available.

Attach the gate which should fall naturally towards the closed position.

Re-check that the gate is level and vertical in the closed position and attach the remaining coach screws.

##### INSTALLING THE KISSING GATE POSTS

Mark the position of the 2 posts. Check that the gate makes full contact with the post on the closed side. Partial contact will be made with the other post.

Dig holes and install posts. Part backfill the post holes. Check the following:  
The post are a maximum distance apart but keep the gate completely trapped between them. Both posts are upright and at the same height.

##### INSTALLING THE REMAINING POSTS

Install the six 1.8m rails onto the kissing posts to establish the position of the END posts.

Install the remaining 2 posts and 3 rails at the end of the rails already fixed to the kissing posts.

Part backfill the post holes. Check the following:  
Both posts are upright and at the same height,  
Both posts are level with the kissing posts.

## COMPLETION

Re-check that all posts are upright and the rails are level  
Tighten hinge bolts and cut off any excess thread  
Complete backfilling the post holes  
Secure the rails with nails  
Attach wire stock fencing if required  
Check that the kissing gate is free from all sharp edges.

If the installer has any questions please contact the office on the number below.



Hinge alignment detail



Medbourne large mobility timber kissing gate